



[OFP]

 OFP 1/0/1-02 NOV-PREPARED BY: J.PERRY TXL-TEL:1 800 555 0199

 ALZ0324/ALZ324 N806SB/738 SELCAL/ ROUTE: DEF RTE
 DEP: SCTE 35 ELEV 294 FT COST INDEX: 5 TTL G/C DIST: 495NM
 ARR: SCEL 35L ELEV 1555 FT SPEED: ECON TTL F/P DIST: 501NM
 ALT: SCIE 20 PERF: 0.0% TTL ADIST: 480NAM
 INIT FL/TEMP: 340/M52

TKOF ALT: AVGE WC: P016

CODES	PAX	CARGO	PTTL	UNDL	:
105	149	0	15496	5488L	:
					:
DOM		ZFM	TOM	LAM	:
41682	MAL	62732	79016	66361	:
	PLN	57178	64071	60873	:
	ACT	:.....

ROUTING: N0430F340 ANROS4A ANROS UQ802 EROLO EROLO4B
 ATIS:

.....

FUEL	CORR.	ENDUR:	ANALYSED TRIP FUEL:
			NO DATA AVAILABLE FOR THIS
003198	0117	FLIGHT
000617	0015	TRIP FUEL
002045	0048	CONT 15 MIN
001033	0030	ALT / SCIE
	FINAL RES
	ADDFU
6893	0231	PLNTOF
	ALT DIFF
	EXTRA / POSS 5488L
	ACTTOF
227	0020	TAXI
	BLOCK / MTCAP 20911

NO TANKERING RECOMMENDED
 DISPATCH DEFINED

ZFM INCR 1000 KG: TF +83 KG ZFM DECR 1000 KG: TF -76 KG
 2000 FT BELOW: TF +279 KG / EET 01.18

.....ALTERNATE INFO.....

ALTN/RWY	TYPE	DIST	COMP/LVL	TIME/PNLTY	FUEL/PNLTY	F.RES
SCIE/20	-	0260	M017/350	0048/-	02045/-	01033

SCIE/ GELUS2C GELUS UQ809 ARUNI ARUNI5C

.....

SCTE/PMC	STD	0920	ETD	0920	OFB	EST TOF	0940	TOF
SCEL/SCL	STA	1115	ETA	1105	ONB	EST LDG	1057	LDG
	HRS	0155		0145	BLOCK			FLIGHT



AWY -BDRY	WAYPOINT MORA	AVTT W/V	SPD	GS TAS	FL TP	TMP	R/DST	MIN	ACC	ETO/ATO RF/FU
	SCTE/35						501/11			6.9/0.2
ANROS4A	AURES 30	01/005 29/026	280		CLB	P05	490/56	004	0004	.../... 6.4/0.7
ANROS4A	ANROS 30	27/031	280		CLB	P05	434/33	008	0012	.../... 5.6/1.5
UQ802	TOC 44	26/043	780		CLB	P01	401/05	005	0017	.../... 5.4/1.8
UQ802	PUKAN 30	007 26/044	742	441 430	340	-52	396/19	000	0017	.../... 5.3/1.8
UQ802	MALTU 48	007 25/040	742	446 431	340	-51	377/30	003	0020	.../... 5.3/1.9
UQ802	NIA 43	007 25/040	741	446 431	340	-51	347/25	004	0024	.../... 5.1/2.0
UQ802 -SCEZ	ELABA 47	012 25/040	740	449 430	340	-51	322/15	003	0027	.../... 5.0/2.1
UQ802	KETIR 47	012 24/034	739	453 429	340	-52	307/37	002	0029	.../... 4.9/2.2
UQ802	ENSER 47	012 24/034	739	452 428	340	-52	270/134	005	0034	.../... 4.8/2.4
UQ802	BOLOK 32	013 22/034	738	458 429	340	-51	136/36	018	0052	.../... 4.2/2.9
UQ802	TOD 43	013 21/030	736	457 428	340	-51	100/15	004	0056	.../... 4.0/3.1
EROL04B	EROL0 43	21/024	280		DSC	P05	085/44	003	0059	.../... 4.0/3.1
EROL04B	KADAK 86	34/015	280		DSC	P09	041/09	008	0107	.../... 3.9/3.2
EROL04B	LOBOX 99	36/012	280		DSC	P09	032/12	002	0109	.../... 3.9/3.3
EROL04B	WISEK 66	08/001	280		DSC	P10	020/20	002	0111	.../... 3.8/3.3
EROL04B	SCEL/35L 53	11/003			DSC		000	006	0117	.../... 3.7/3.4



.....WIND INFORMATION.....

CLIMB		TOC		PUKAN		MALTU
350 261/041 -54	380 265/036 -60	380 265/036 -60	380 256/036 -60			
310 267/035 -43	360 262/040 -56	360 262/040 -56	360 254/038 -56			
200 281/040 -18	340 260/044 -52	340 260/044 -52	340 252/040 -51			
150 282/036 -09	320 265/038 -46	320 265/038 -46	320 259/034 -46			
100 288/025 -01	300 271/032 -41	300 271/032 -41	300 269/028 -41			
NIA		ELABA		KETIR		ENSER
380 255/036 -60	380 255/036 -60	380 242/034 -59	380 242/034 -59			
360 254/038 -56	360 254/038 -56	360 238/034 -55	360 238/034 -55			
340 252/040 -51	340 252/040 -51	340 235/034 -52	340 235/034 -52			
320 259/034 -46	320 259/034 -46	320 240/030 -46	320 240/030 -46			
300 269/028 -41	300 269/028 -41	300 246/026 -41	300 247/026 -41			
BOLOK		TOD		DESCENT		
380 226/034 -56	380 234/031 -55	350 213/030 -52				
360 220/035 -54	360 220/030 -53	310 210/028 -44				
340 215/036 -51	340 206/031 -51	200 241/004 -18				
320 212/033 -46	320 208/029 -46	150 339/015 -07				
300 208/029 -41	300 210/026 -41	100 001/009 +04				



[ATC Flight Plan]

FF SCTZZQZX SCEZZQZX
EDDTSBAB
(FPL-ALZ324-IS
-B738/M-SDE2E3FGHIRWXY/LB1
-SCTE0920
-N0430F340 ANROS4A ANROS UQ802 EROLO EROLO4B
-SCEL0117 SCIE
-PBN/A1B1C1D1S1S2 NAV/RNVD1E2A1 DAT/V DOF/211102 REG/N806SB
EET/SCEZ0027 OPR/ALZ RVR/075 RMK/TCAS)



[Additional Info]

D I S P A T C H B R I E F I N G I N F O ALZ324 SCTE/SCEL



[Weather]

SCTE --> SCEL ALZ 324 / 02NOV2021
LIDO/WEATHER SERVICE DATE : 02Nov2021 TIME : 08:49 UTC

AIRMETs:
No Wx data available

SIGMETs:
No Wx data available

Tropical Cyclone SIGMETs:
No Wx data available

Volcanic Ash SIGMETs:
No Wx data available

Destination:
SCEL/SCL ARTURO MERINO BENITEZ INTL
SA 020800 16008KT 8000 NSC 10/08 Q1017 NOSIG
FT 020826 0208/0306 16004KT 3000 BR BKN003 TX29/0219Z TN09/0209Z
TEMPO 0209/0211 VRB02KT 1000 BR
BECMG 0214/0216 19004KT CAVOK
BECMG 0218/0220 22013KT
BECMG 0302/0304 16005KT

Destination Alternates:
SCIE/CCP CARRIEL SUR INTL
SA 020800 19005KT CAVOK 08/07 Q1018
FT 020400 0206/0306 22010KT CAVOK TX18/0218Z TN09/0210Z
TEMPO 0207/0212 15004KT 6000 NSC
BECMG 0213/0215 25007KT
BECMG 0218/0220 23015KT
BECMG 0303/0305 33006KT
BECMG 0304/0306 36005KT 5000 BR BKN006

Departure:
SCTE/PMC EL TEPUAL INTL
SA 020800 03009KT 9999 SCT030 OVC045 11/08 Q1017 NOSIG
FT 020405 0206/0306 01007KT 9999 OVC025 TN09/0208Z TX18/0218Z
BECMG 0212/0214 BKN035
BECMG 0216/0218 SCT040
BECMG 0300/0302 OVC025

AIRPORTLIST ENDED



[Notam]

LIDO-NOTAM-BULLETIN INCLUDES NOTAM, COMP NOTAM AND AIP-REGULATION
VALID: 2111020920 - 2111021426 STD(EOBT)+TRIP+ALTN+3HRS
ALZ 324 /02NOV OFP-NR: 1/0/1
ROUTE: SCTE - SCEL ALTN: SCIE
N0430F340 ANROS4A ANROS UQ802 EROLO EROLO4B

=====
DEPARTURE AIRPORT - DETAILED INFO
=====

SCTE/PMC EL TEPUAL INTL

+++++ AIRPORT +++++

- A4986/21 VALID: 22-OCT-21 1643 - 22-JAN-22 2359
PRKG 4 AND PRKG 5 CLSD
- A4985/21 VALID: 22-OCT-21 1639 - 22-JAN-22 2359
BOARDING BRIDGE 4 U/S DUE TO WIP
- A4984/21 VALID: 22-OCT-21 1631 - 03-JAN-22 2359
AP POSS DLA IN ARR AND DEP DUE TO PARKING 4 AND 5 CLSD
- A4980/21 VALID: 22-OCT-21 1354 - 20-DEC-21 0900
DLY BTN 0300-0900
MOV AREA CTN DUE TO WORK RWY SEALS, DISLODGE IN SAFETY STRIPES,
PRUNING TREES THR 35
- A4772/21 VALID: 06-OCT-21 1313 - 03-JAN-22 2359
BOARDING BRIDGE 5 U/S DUE TO WIP
- A4235/21 VALID: 06-SEP-21 2234 - UFN
REF AIP-CHILE VOL I AD 2.7.8 ELIMINATE POINT 2.23 WHERE IT SAYS:
ACFT QUE PRESENTE FPL VIA IFIS / EMAIL, ACTIVACION Y CANCELACION
CON SCTE, DEBEN CONTACTAR ARO SCTE TEL +56652486221 30 MIN ANTES
DEP PARA VERIFICAR ACEPTACION.
ADEMAS POINT AD 2.0-3 SCTZ POINT 3.3 WHERE IT SAYS: ACFT QUE
PRESENTEN FPL VIA IFIS, ACT Y CNL DEBEN CONTACTAR ARO SCTE AL TEL
65- 2486221 30 MIN ANTES DEL DEP PARA VERIFICAR ACEPTACION
- A4208/21 VALID: 04-SEP-21 1444 - 04-DEC-21 2359
DLY BTN 1100-FCCV
FSS OPNL HR
- A4180/21 VALID: 03-SEP-21 0050 - 03-DEC-21 2359
PRKG 7 CLSD

=====
DESTINATION AIRPORT - DETAILED INFO
=====

SCEL/SCL ARTURO MERINO BENITEZ INTL

+++++ AIRPORT +++++

- A5090/21 VALID: 02-NOV-21 1330 - 02-NOV-21 1930
PRKG C1B CLSD DUE TO MAINT
- A5099/21 VALID: 31-OCT-21 0000 - 10-NOV-21 2359
TWY INDIA INT TWY LIMA CLSD DUE TO WIP
INSTRUCTIONS: SANTIAGO GNDC 122.2 MHZ
- A5102/21 VALID: 31-OCT-21 0000 - 10-NOV-21 2359
INT TWY ALFA WITH TWY CHARLIE CLSD DUE TO WIP
INSTRUCTIONS: SANTIAGO GNDC 122.2MHZ
- A5101/21 VALID: 31-OCT-21 0000 - 10-NOV-21 2359
TWY CHARLIE CLSD BTN RWY 17L/35R AND TWY KILO DUE TO WIP



A5028/21 VALID: 26-OCT-21 1613 - 26-NOV-21 0759
 DLY BTN 0401-0759
 METAR SPECI AND MET REPORT, SPECIAL AUTO INFO. EXC THAT LVP IS ACT

A5024/21 VALID: 26-OCT-21 1418 - 15-NOV-21 2359
 TCLL ON TWY SIERRA U/S.
 INSTRUCTIONS: SANTIAGO GNDC 122.2MHZ

A4949/21 VALID: 26-OCT-21 1300 - 07-NOV-21 1500
 TUE-SUN BTN 1300-1500
 IFR PRACTICES CAN BE AUTHORIZED TO SCEL WITH THE PURPOSE OF
 MAINTENANCE OF QUALIFICATION OF PILOTS. AP MUST BE IN VMC AND BOTH
 RWY AVBL. ONE ACFT AT EACH TIME, POSS DLA MAY BE APPLIED. PRIOR
 COOR WITH SUPERVISOR ACCS PHONE: +56988378367

A4954/21 VALID: 20-OCT-21 2300 - 01-JAN-22 0024
 DLY BTN 2300-FCCV
 FSS SANTIAGO HO AFT 2300HR,
 INSTRUCTIONS: SANTIAGO INFO 122.4MHZ. ALTN 135.4MHZ
 IF COM ARE NOT POSS WITH THAT FREQ THEY SHOULD BE
 MADE BY TEL WITH OTHER OPNL OFFICES

A4917/21 VALID: 19-OCT-21 0924 - 03-NOV-21 2359
 PRKG 20 CRITICAL ACFT ICAO AIRPORT REFERENCE CODE(ARC) E.
 SELF-PROPELLED ENTRY. SIGNALERS WINGTIP MANDATORY.
 INSTRUCTIONS: SANTIAGO GNDC 122.2MHZ

A4916/21 VALID: 19-OCT-21 0923 - 03-NOV-21 2359
 PRKG 22 CRITICAL ACFT A320.
 INSTRUCTIONS: SANTIAGO GNDC 122.2 MHZ

A4914/21 VALID: 19-OCT-21 0922 - 03-NOV-21 2359
 TWY GOLF CTN, DISABLED BTN PRKG 23 AND ABEAM PRKG 22. ACCESS TO
 PRKG 23 AND PRKG 22 VIA DEMARCED TAXILANE ENTRY TO EACH PRKG
 SELFPROPELLED WITH MINIMUM POWER IF NO POSS, SWITCH PWR OFF IN
 TAXILANE GOLF AND REQUEST A TOWING FM YOUR COMPANY. TAXILANE GOLF
 RESTRICTED TO ACFT CODE C OR SMALLER WINGSPAN WINGTIP SIGNALERS
 MANDATORY.
 INSTRUCTIONS: SANTIAGO GNDC 122.2MHZ

A4915/21 VALID: 19-OCT-21 0922 - 03-NOV-21 2359
 PRKG 19 CRITICAL ACFT ICAO AIRPORT REFERENCE CODE(ARC) E.
 SELF-PROPELLED ENTRY. SIGNALERS WINGTIP MANDATORY.
 INSTRUCTIONS: SANTIAGO GNDC 122.2MHZ

A4913/21 VALID: 19-OCT-21 0921 - 03-NOV-21 2359
 TCLL ON TWY GOLF U/S BTN PRKG 22 AND PRKG 23.
 INSTRUCTIONS: SANTIAGO GNDC 122.2MHZ

A4912/21 VALID: 19-OCT-21 0920 - 03-NOV-21 2359
 PRKG 21 CRITICAL ACFT A321.
 INSTRUCTIONS: SANTIAGO GNDC 122.2MHZ

A4911/21 VALID: 19-OCT-21 0919 - 03-NOV-21 2359
 TWY GOLF CTN, DISPLACED AXIS BTN PRKG 22
 AND PRKG 23, AVBL FOR CODE C ACFT OR LOWER WING SPAN INSTRUCTIONS:
 SANTIAGO GNDC 122.2MHZ

A4904/21 VALID: 18-OCT-21 1426 - 20-DEC-21 2359
 TWY ALFA 1 AVBL TO ENTRY AND OR EXIT RWY17L/34

A4774/21 VALID: 06-OCT-21 1404 - 20-DEC-21 2359
 TWY KILO BTN TWY HOTEL AND TWY MIKE AVBL
 ONLY FOR CODE D ACFT OR LOWER WINGSPAN. DUE TO WIP.
 EXCLUDE TOWED ACFT.
 INSTRUCTIONS: SANTIAGO GNDC 122.2MHZ

A4726/21 VALID: 01-OCT-21 2104 - 20-DEC-21 2359
 TWY ZULU BTN TWY GOLF AND TWY ZULU 3 CLSD WHILE ACFT PARKED.
 INSTRUCTIONS: SANTIAGO GNDC 122.2MHZ

A4725/21 VALID: 01-OCT-21 2001 - 20-DEC-21 2359
 TWY ZULU CLSD BTN TWY HOTEL AND TWY TANGO WHILE ACFT PARKED.
 INSTRUCTIONS: SANTIAGO GNDC 122.2MHZ

A4723/21 VALID: 01-OCT-21 2000 - 20-DEC-21 2359
 TWY ZULU CLSD BTN TWY ZULU 1 AND TWY YANKY WHILE ACFT PARKED.
 INSTRUCTIONS: SANTIAGO GNDC 122.2MHZ



A4724/21 VALID: 01-OCT-21 2000 - 20-DEC-21 2359
 TWY ZULU CLSD BTN TWY ZULU 2 AND TWY ZULU 3 WHILE ACFT PARKED.
 INSTRUCTIONS: SANTIAGO GNDC 122.2MHZ

A4642/21 VALID: 30-SEP-21 1313 - 24-DEC-21 2359
 TWY HOTEL CLSD BTN TWY ALFA AND TWY KILO DUE TO WIP. INSTRUCTIONS:
 SANTIAGO GNDC 122.2MHZ

A4635/21 VALID: 30-SEP-21 1305 - 30-NOV-21 2359
 TWY LIMA CLSD BTN TWY QUEBEC AND TWY SIERRA WHILE ACFT PARKED
 INSTRUCTIONS: SANTIAGO GNDC 122.2 MHZ

A4634/21 VALID: 30-SEP-21 1304 - 30-NOV-21 2359
 TWY LIMA CLSD BTN TWY INDIA AND TWY SIERRA WHILE ACFT PARKED
 INSTRUCTIONS: SANTIAGO GNDC 122.2 MHZ

A4633/21 VALID: 30-SEP-21 1303 - 24-DEC-21 2359
 TWY ALFA CLSD BTN TWY FOXTROT AND TWY JULIETT DUE TO WIP.
 INSTRUCTIONS: SANTIAGO GNDC 122.2 MHZ

A4632/21 VALID: 30-SEP-21 1302 - 24-DEC-21 2359
 HOLDING BAY RWY 17L SOUTH AXIS CLSD WIP
 INSTRUCTIONS: SANTIAGO GNDC 122.2MHZ

A4540/21 VALID: 24-SEP-21 1600 - 24-DEC-21 1000
 DLY BTN 0100-1000
 ENG TESTING NOT ALLOWED

A4276/21 VALID: 09-SEP-21 1200 - 08-DEC-21 2359
 INFO MET CUP ANEMOMETER RWY 34 AVBL AT MET, TWR AND ACCS

A3757/21 VALID: 13-AUG-21 0148 - 12-NOV-21 2359
 TWY ALFA CLSD BTN TWY JULIET AND TWY DELTA WHILE ACFT PARKED
 INSTRUCTIONS: SANTIAGO GNDC 122.2MHZ

A3292/21 VALID: 19-JUL-21 1819 - UFN
 PRKG 41 OPRG NML WITH FUEL PIT. CRITICAL ACFT B744.
 INSTRUCTIONS GNDC 122.2MHZ.

A2338/21 VALID: 19-MAY-21 2158 - UFN
 PRKG 18 CRITICAL ACFT ICAO AIRPORT REFERENCE CODE (ARC)E.
 SELFPROPELLED ENTRY. SIGNALERS WINGTIP MANDATORY.
 INSTRUCTIONS: SANTIAGO GNDC 122.2MHZ

A2336/21 VALID: 19-MAY-21 2157 - UFN
 PRKG 16 CRITICAL ACFT ICAO AIRPORT REFERENCE CODE (ARC)E.
 SELFPROPELLED ENTRY. SIGNALERS WINGTIP MANDATORY.
 INSTRUCTIONS: SANTIAGO GNDC 122.2MHZ

A2337/21 VALID: 19-MAY-21 2157 - UFN
 PRKG 17 CRITICAL ACFT ICAO AIRPORT REFERENCE CODE (ARC)E.
 SELFPROPELLED ENTRY. SIGNALERS WINGTIP MANDATORY.
 INSTRUCTIONS: SANTIAGO GNDC 122.2MHZ

A1996/21 VALID: 28-APR-21 2107 - UFN
 NEW REMOTE PRKG 42 AVBL WITH FUEL PIT. CRITICAL ACFT B747-8.
 SELFPROPELLED ENTRY, TOWED EXIT.
 INSTRUCTIONS: SANTIAGO GNDC 122.2MHZ OR REQ FOLLOW ME

A1550/21 VALID: 01-APR-21 1930 - UFN
 NEW PRKG C1 FOR WIDE BODY ACFT AVBL WITH FUEL PIT. SELF-PROPELLED
 ENTRY. CRITICAL ACFT A350-900. WINGTIP SIGNALERS MANDATORY.
 INSTRUCTIONS: SANTIAGO GNDC 122.2MHZ OR RQST FOLLOW ME

A1119/21 VALID: 11-MAR-21 1715 - UFN
 PRKG 24 CRITICAL ACFT A321.
 INSTRUCTIONS: SANTIAGO GND CONTROL 122.2 MHZ.

A1118/21 VALID: 11-MAR-21 1714 - UFN
 PRKG 23 CRITICAL ACFT A321.
 INSTRUCTIONS: SANTIAGO GND CONTROL 122.2 MHZ.

+++++ RUNWAY +++++

A5060/21 VALID: 02-NOV-21 1100 - 02-NOV-21 1759
 RWY 17L/34 CLSD EXCEPT LVP IS ACT. WIP.

A5100/21 VALID: 31-OCT-21 0000 - 10-NOV-21 2359
 DUE TO CLSD TWY CHARLIE PREPARE YOUR LANDING
 IN ORDER TO VACATE RWY 17L/35R EXPEDITIOUSLY



MINIMIZING RWY OCCUPANCY TIME
A4957/21 VALID: 20-OCT-21 1936 - 24-DEC-21 0859
DLY BTN 0800-0859
RWY 17R/35L AVBL ARR AND DEP WIDE BODY ACFT, CERTIFIED STAGE THREE
NOISE LEVEL OR QUIETER ACFT, IDLE REVERSE OR THRUST REDUCTION
REQUIRED

A4532/21 VALID: 24-SEP-21 0100 - 24-DEC-21 0300
DLY BTN 0100-0300
RWY 17R/35L ARR AND DEP ON REQUEST AUTHORIZED, CERTIFIED
STAGE THREE NOISE LEVEL OR QUIETER ACFT, IDLE REVERSE OR THRUST
REDUCTION REQUIRED.

A4122/21 VALID: 09-SEP-21 1200 - 08-DEC-21 2359
THR 34
DECLARED DISTANCES:
RWY TORA TODA ASDA LDA
17L 3000M 3000M 3200M 3000M
34 3000M 3000M 3000M 3000M

A4125/21 VALID: 09-SEP-21 1200 - 08-DEC-21 2359
DTHR 35R 200M TO N DUE TO WIP, NEW THR 34
COORD THR 34
LAT 33 24 11,1771S
LON 70 47 06,9293W
ELEVATION
473,23M OR 1.555,1047FT

+++++ SID +++++

A4311/21 VALID: 10-SEP-21 2107 - 08-DEC-21 2359
DURING THE PERIOD OF OPERATIONS OF TEMPO RWY34, PUBLISHED SID FM
RWY35R WILL BE APPLICABLE TO RWY34

+++++ APPROACH PROCEDURES +++++

B1596/21 VALID: 02-NOV-21 1100 - 20-DEC-21 2300
MON-FRI 1100-2300, SAT 1100-1700
ILS/GP 335.0MHZ/CH40X RWY 17L U/S EXC LVP ACT
B1597/21 VALID: 02-NOV-21 1100 - 20-DEC-21 2300
MON-FRI DLY BTN 1100-2300, SAT DLY BTN 1100-1700
ILS/LOC 110.3MHZ RWY 17L U/S EXC LVP ACT

=====
DESTINATION ALTERNATE AIRPORT(S)
=====

SCIE/CCP CARRIEL SUR INTL

+++++ AIRPORT +++++

B1399/21 VALID: 30-SEP-21 0418 - 29-DEC-21 2359
FREQ 129.35 MHZ CONCEPCION RDR, WO COVERAGE OUTSIDE CTR BLW 5000FT
INSTRUCCIONES: CONCEPCION RDR 129.35 MHZ

A4262/21 VALID: 09-SEP-21 0001 - 07-DEC-21 2359
INFO MET REPORT AND SPECIAL NOT AVBL FOR RWY 02R/20L

B1258/21 VALID: 01-SEP-21 2139 - 29-NOV-21 2359
APP/RDR CONCEPCION FREQ 124.2 MHZ U/S.
INSTRUCCIONES: CONCEPCION APP/RDR 129.35MHZ

A3894/21 VALID: 20-AUG-21 1859 - 18-NOV-21 2230
AP CTN DUE TO MOD BIRD COND

+++++ RUNWAY +++++

A4460/21 VALID: 21-SEP-21 1712 - 21-DEC-21 2359



TRANSMISSOMETER (RVR) TDZ, MIDDLE AND ROLL OUT RWY 02/20 U/S, REF AIP

SUP S09/2021

A4196/21 VALID: 03-SEP-21 2224 - 01-DEC-21 2359

REF AIP SUP S09 VOL I AND VOL II IS MODIFIED AS FOLLOWS:

WHERE IT SAYS: ILUMINACION BARRA DE ALA RWY 02R/20L

IT MUST SAY : LUCES DE UMBRAL (RTHL) Y LUCES DE TERMINO DE PISTA (RENL

A4173/21 VALID: 03-SEP-21 0400 - 02-DEC-21 2359

RWY 02/20 CLSD.

SEE SUP AIP-S09 SCIE CIERRE DE PISTA

A3629/21 VALID: 01-SEP-21 0000 - 30-NOV-21 2359

REF AIP SUP 09/2021 VOL I AND VOL II IS MODIFIED AS FOLLOWS: WHERE

IT SAYS: RWY 02R TODA 1972M

IT MUST SAY : RWY 02R TODA 2107M

+++++ SID +++++

A3323/21 VALID: 12-AUG-21 0000 - UFN

REF AIP-CHILE VOL II AMDT NR 88 12 AUG 2021, SID 4 RNAV RWY20 IS

MODIFIED AS FOLLOWS IE593 - ESIDO:

WHERE IT SAYS: 016 DEG

IT MUST SAY : 015 DEG

+++++ APPROACH PROCEDURES +++++

A3322/21 VALID: 12-AUG-21 0000 - UFN

REF AIP-CHILE VOL II AMDT NR 88 12 AUG 2021, IAC 9 RNAV RWY20 IS

MODIFIED AS FOLLOWS HLDG ARTEN:

WHERE IT SAYS: 019 DEG

IT MUST SAY : 020 DEG

+++++ STAR +++++

A3321/21 VALID: 12-AUG-21 0000 - UFN

REF AIP-CHILE VOL II AMDT NR 88 12 AUG 2021, STAR 4 RNAV RWY 20

CODING TABLE IS MODIFIED AS FOLLOWS:

WHERE IT SAYS: PANEX 3C

IT MUST SAY : PANEX 4C

A3328/21 VALID: 12-AUG-21 0000 - UFN

REF AIP-CHILE VOL II AMDT NR 88 12 AUG 2021, STAR 2 RNAV RWY 02 IS

MODIFIED AS FOLLOWS:

ESIDO-IE593 WHERE IT SAYS 196 DEG, IT MUST SAY 195 DEG IE593-IE343

WHERE IT SAYS 196 DEG, IT MUST SAY 195 DEG IE193-DAPSO WHERE IT

SAYS 109 DEG, IT MUST SAY 110 DEG ARUNI-IE593 WHERE IT SAYS 222

DEG, IT MUST SAY 221 DEG IE344-IE192 WHERE IT SAYS 203 DEG, IT

MUST SAY 204 DEG IE192-DAPSO WHERE IT SAYS 289 DEG, IT MUST SAY

290 DEG

ARUNI TXT WHRE IT SAYS FL90, IT MUST SAY FL100

=====
EXTENDED AREA AROUND DEPARTURE
=====

SCTZ PUERTO MONTT FIR/UIR

W1496/21 VALID: 01-NOV-21 1300 - 15-NOV-21 2100

DLY BTN 1300-2100

EXPLOSIVE DEMOLITIONS AT 8.0 NM NW OF AD SCFT

ZONE ...D... RDO 1 NM CENTERED ON GEO COORD: 430856S / 0720016W

SECT VILLA ESPOLON

F) GND G) 2000 FT AGL



W1497/21 VALID: 01-NOV-21 1200 - 15-NOV-21 2100
DLY BTN 1200-2100
EXPLOSIVE DEMOLITIONS AT 5.4 NM SW OF AD SCFT
ZONE ...D... RDO 1 NM CENTERED ON GEO COORD: 431206S / 0715834W
SECT PASARELA DESAGUE LAGO ESPOLON
F) GND G) 2000 FT AGL

A5076/21 VALID: 29-OCT-21 1547 - UFN
REF AIP CHILE VOL II AMDT 89 EFFECTIVE FROM 02 DEC 2021, GEN 0.13,
GEN 0.14 AND GEN 0.16, ARE MODIFIED AS FOLLOWS:
-WHERE IT SAYS FREIRE STAR 1 RWY01 NEKOR 2A/ KIBEL 1D/ MALTU 2
MUST SAY FREIRE STAR 1 RWY 01 NEKOR 3A/ KIBEL 1D/ MALTU 3
-WHERE IT SAYS FREIRE SID 2 KIDEM 3B / KETIR 3K / MALTU 3B / KIBEL
1L MUST SAY FREIRE SID 2 KIDEM 3B / KETIR 3K / MALTU 3B / KIBEL 1M
-WHERE IT SAYS PUERTO MONTT PDC DATE 02 DEC 2021
MUST SAY 03 DEC 2020
-WHERE IT SAYS PUERTO MONTT BCAC DATE 02 DEC 2021
MUST SAY 15 AUG 2019
-WHERE IT SAYS PUERTO MONTT STAR 3 SARTO 1B / OSARA 3B / GENEK 4B
/ GENEK 4C / CAUKE 3B
MUST SAY STAR 3 SARTO 1B / OSARA 3B / GENEK 4B / GENEK 4C / CAUKE
4B -WHERE IT SAYS PUERTO MONTT SID 1 KIKOP 2D / KIKOP 2A / VOVKI
2B / VOVKI 4A
MUST SAY SID 1 KIKOP 2D / KIKOP 4A / VOVKI 2B / VOVKI 4A
-WHERE IT SAYS PUERTO MONTT SID 2 GUTIN 2D / OSARA 2K / GUTIN 4B /
OSARA 4J
MUST SAY SID 2 GUTIN 2D / OSARA 2K / GUTIN 4B / OSARA 3J
-WHERE IT SAYS PUNTA ARENAS ATCSMAC DATE 12 AUG 2021
MUST SAY 02 DEC 2021
-WHERE IT SAYS VALDIVIA IAC 1 ILS RWY 35 DATE 02 DEC 2021
MUST SAY 12 AUG 2021
-WHERE IT SAYS VALDIVIA INFO RWY DATE 02 DEC 2021
MUST SAY 12 AUG 2021)
//END PART 01//

A5076/21 NOTAMN
Q) SCXX/QXXXX/IV/BO/W/000/999/4126S07306W100
A) SCFZ SCEZ SCTZ SCIZ SCCZ PART 02 OF 02 B) 2110291547 C) PERM E)
-WHERE IT SAYS VALDIVIA IAC 2 VOR RWY 17 DATE 02 DEC 2021
MUST SAY 16 AUG 2018
-WHERE IT SAYS VALDIVIA IAC 3 VOR RWY 35 DATE 02 DEC 2021
MUST SAY 16 AUG 2018
F) GND G) UNL)
END PART 02 OF 02

R0097/21 VALID: 29-OCT-21 1440 - 11-NOV-21 2359
TEMPORARY PROHIBITED ZONES ARE ESTABLISHED TO THE FLT OF RPAS,
AS FOLLOWS:
1-SECT TEMUCO, RDO 02NM, NXT GEO COORD:
384438S / 0723539W
2-SECT VICTORIA, RDO 02NM, NXT GEO COORD:
381351S / 0722035W
3-SECT ANGOL, RDO 02NM NXT GEO COORD:
374751S / 0724141W
4-SECT EAST VICTORIA, RDO 02NM NXT GEO COORD:
381221S / 0720936W
5-SECT LONQUIMAY, RDO 02NM NXT GEO COORD:
382715S / 0712153W
6-COMUNA CARAHUE, DELIMITED AREA NXT GEO COORD:
384128.02S / 0732242.55W
384352.38S / 0732028.88W
384123.31S / 0730855.19W
384507.35S / 0730919.43W
7-COMUNA VICTORIA DELIMITED AREA NXT GEO COORD:
381541.33S / 0722538.07W
PART 1 OF 2



R0097/21 NOTAMN

Q) SCXX/QRPCA/IV/BO/W/000/020/3727S07327W005
A) SCEZ SCTZ PART 2 OF 2 B) 2110291440 C) 2111112359
E) 382536.29S / 0720816.72W

381707.42S / 0720227.94W
380240.81S / 0721701.25W

8-COMUNA ANGOL DELIMITED AREA NXT GEO COORD:

374337.50S / 0724231.44W
380234.56S / 0731009.68W
381439.04S / 0725959.75W
375402.44S / 0722941.53W

9-COMUNA COLLIPULLI DELIMITED AREA NXT GEO COORD:

381616.06S / 0725049.14W
375158.17S / 0722728.33W
375811.26S / 0721410.71W
382115.06S / 0723326.37W

10-COMUNA TEMUCO DELIMITED AREA NXT GEO COORD:

384620.43S / 0724025.53W
385225.99S / 0724258.50W
385244.53S / 0721904.51W
384422.48S / 0721450.17W

SPECIAL SITUATIONS

THE ADMINISTRATION OF THE PROHIBITED AREAS DESCRIBED, IN MATTERS OF) REMOTELY PILOTED AIRCRAFT FLIGHT (RPAS), IS IN CHARGE OF A LIAISON OFFICER, WITH A TELEPHONE CONTACT POINT +56999791707.

F) GND G) 2000FT AGL)

PART 2 OF 2

W1498/21 VALID: 28-OCT-21 1200 - 15-NOV-21 2000

DLY BTN 1200 - 2000
RPAS FLT ZONE ... D ... SECT LAGO CABURGUA
ON GEO COORD: 391121S / 714640W RDO 0.5 NM
F) GND G) 400FT AGL

R0096/21 VALID: 27-OCT-21 1231 - 11-NOV-21 2359

TEMPORARY PROHIBITED ZONES ARE ESTABLISHED TO THE FLIGH OF RPAS, AS FOLLOWS:

1-SECTOR LOS ALAMOS, NXT GEO COORD:

372729.20S/732706.18W
373905.14S/732252.33W
373534.81S/732240.76W
373856.59S/732715.94W

2-SECTOR LOS ANGELES, NEXT GEO COORD:

372701.76S/722155.74W
372744.57S/722051.02W
372700.81S/722052.25W
372746.09S/722152.86W

3-SECTOR CONTULMO, NXT GEO COORD:

375841.14S/731555.17W
380218.17S/731128.93W
375845.82S/731122.22W
380213.88S/731603.56W

4-SECTOR TIRUA, NXT GEO COORD:

381844.92S/733146.09W
382229.20S/732729.20W
381858.20S/732713.45W
382217.13S/733158.41W

THE ADMINISTRATION OF THE TEMPORARY PROHIBITED ZONES DESCRIBED, IN MATTERS OF FLIGHT OF REMOTELY PILOTED SYSTEMS REMOTELY (RPAS), IS IN CHARGE OF THE CHIEF OF SERVICE OF THE CHIEF OF THE NATIONAL DEFENSE FOR THE BIO BIO AND ARAUCO REGION, WITH THE CONTACT POINT TELEPHONE + 56 41 2742084 CEL +569997905151
F) GND G) 2000FT AGL

W1478/21 VALID: 27-OCT-21 1200 - 10-NOV-21 2000

DLY BTN 1200-2000



RPAS FLT SECT 2.46NM NE SCPF ZONE ...D... RDO 0.13 NM
 ON GEO COORD: 412536/0725213W OPERATOR MUST NOTIFY
 START/END OF ACT TO AFIS PALOMA INFO TEL 652486296 INSTRUCTIONS:
 PALOMA INFO 127.3
 F) GND G) 400 FT AGL

A4971/21 VALID: 21-OCT-21 2031 - 16-DEC-21 2359
 TRIGGER NOTAM - PERM AMDT AIP CHILE VOL I NR 53 AND AMDT AIP CHILE
 VOL II NR 89 WEF 02 DEC 2021.
 AVBL AT:
 HTTPS://WWW.AIPCHILE.GOB.CL/AIP/VOL1/SECCION/AMDT
 HTTPS://WWW.AIPCHILE.GOB.CL/AIP/VOL2/SECCION/AMDT

W1391/21 VALID: 15-OCT-21 1200 - 15-DEC-21 1700
 DLY BTN 1200-1700
 RPAS FLT SECT PARGUA W CALBUCO ZONE ...D... RDO 0.24 NM
 ON GEO COORD: 414726S / 0732946W
 OPERATOR MUST NOTIFY STARTING/ENDING OF ACT TO ATS
 AP EL TEPUAL TEL 65-2486236
 OPERATOR:CRISTOBAL VALDIVIESO/LIXANDRO CISTERNAS TEL +56229294514
 INSTRUCTIONS: PUERTO MONTT RADAR 121.3MHZ
 F) GND G) 400FT AGL

B1468/21 VALID: 13-OCT-21 1547 - 31-DEC-21 2359
 MSSR TEMUCO - CERRO ARAUCARIAS INOP, TEMUCO APP RDR SER LTD
 TO ZONES AND LEVELS BELOW COVERAGE MSSR CONCEPCION AND MSSR PUERTO
 MONTT
 INSTRUCTIONS: TEMUCO APP 119.2MHZ ALTN 118.7MHZ

B1396/21 VALID: 01-OCT-21 0300 - 01-JAN-22 0300
 MSSR TEMUCO - CERRO ARAUCARIAS U/S

W1281/21 VALID: 27-SEP-21 1100 - 27-NOV-21 2100
 DLY BTN 1100-2100
 RPAS FLT SECT PUERTO MONTT ZONE ...D... ON 2 NXT GEO COORD:
 1) FM 412518S/0724546W TO 412427S/0724930W
 2) FM 412409S/0724908W TO 412656S/0724911W
 OPERATOR MUST NOTIFY STARTING/ENDING OF ACT TO
 ATS EL TEPUAL AP TEL 65-2486236
 OPERATOR: DIEGO GONZALEZ / ROBINSON TORRES CEL +569 76213727
 INSTRUCTIONS: PUERTO MONTT TWR 118.1 MHZ
 PUERTO MONTT RDR 121.3 MHZ
 F) GND G) 262FT AGL

W1294/21 VALID: 27-SEP-21 1100 - 27-NOV-21 2100
 DLY BTN 1100 - 2100
 RPAS FLT SECT LA UNION, LOS RIOS REGION, ZONE ...D... LINEAS BTN
 NTX GEO COORD:
 401507S/0723848W-401915S/0723703W AND
 402914S/0723656W-403024S/0723045W.
 INSTRUCTUIONS OSORNO TWR 118.9MHZ.
 F) GND G) 262FT AGL

W1295/21 VALID: 27-SEP-21 1100 - 27-NOV-21 2100
 DLY BTN 1100 - 2100
 RPAS FLT SECT OSORNO, LOS LAGOS REGION, ZONE ...D... RDO 5.52NM
 LINEAS BTN NTX GEO COORD:
 402505S/0732100W-404403S/0732224W
 402931S/0733635W-403344S/0732918W
 403049S/0732324W-403216S/0732507W
 ZONE ...D... RDO 12.53NM CENTERED ON NXT GEO
 COORD:403438S/0725858W LINEAS BTN NXT GEO COORD:
 404446S/0724618W-404633S/0724702W
 404856S/0725915W-404822S/0730057W.
 INSTRUCTUIONS OSORNO TWR 118.9MHZ.
 F) GND G) 262FT AGL

B1307/21 VALID: 07-SEP-21 1517 - 06-DEC-21 1900
 PSR PUERTO MONTT U/S

F0261/21 VALID: 06-SEP-21 2010 - UFN
 REF AIP CHILE VOL I PAGE AD 3.9-3.12-C DE FECHA 22 ABR 2021



ELIMINESE TODA INFO RESPECTO DE COQUIMBO/AD TAMBILLOS SCCQ
A4191/21 VALID: 05-SEP-21 0400 - 03-APR-22 0259
SUMMER TIME IS ESTABLISHED IN CHILE AS FOLLOWS:
AT CONTINENTAL AREA, LMT = UTC - 3HR
AT WESTERN INSULAR AREA, LMT = UTC - 5HR
SE ESTABLECE HORARIO DE VERANO EN CHILE COMO SIGUE:
EN AREA CONTINENTAL, LMT = UTC - 3HR
EN AREA INSULAR OCCIDENTAL, LMT = UTC - 5HR

A3350/21 VALID: 22-JUL-21 1530 - UFN
SANTIAGO OCEANIC CONTROL CENTER SAT PHONE
REF AIP CHILE VOL I PAGES ENR 2.1-21 AND 2.1-22
DATED 15AUG2019
HAS BEEN MODIFIED AS FOLLOWS:
WHERE IT SAYS: TEL SATELITAL 0881623489497
IT MUST SAY: TEL SATELITAL 0881652415790

A3154/21 VALID: 08-JUL-21 1930 - UFN
SANTIAGO OCEANIC CONTROL CENTER SAT PHONE
REF AIP CHILE VOL I PAGE ENR 2.1-5 DATED 22APR2021
HAS BEEN MODIFIED AS FOLLOWS:
WHERE IT SAYS: TEL SATELITAL 0881623489497
IT MUST SAY: TEL SATELITAL 0881652415790

A3126/21 VALID: 06-JUL-21 1523 - UFN
REFERENCE TO AIP-CHILE VOL I PAGE ENR 5.1-6 IS MODIFIED AS
FOLLOWS: WHERE IT SAYS: SC-P30 FIR SANTIAGO- VINNA DEL MAR
IT MUST SAY : SC-P30 FIR SANTIAGO - PALACIO
PRESIDENCIAL VINNA DEL MAR

=====
EXTENDED AREA AROUND DESTINATION
=====

SCEZ SANTIAGO FIR/UIR

W1494/21 VALID: 02-NOV-21 1300 - 07-NOV-21 0300
NOV 02 BTN 1300-1700 / 2300-2359, NOV 03 - 06 DLY BTN 0000-0300 /
1300-1700 / 2300-2359, NOV 07 BTN 0000-0300
MIL PJE SECT PEQUENCO ZONE ...D... CIRCULAR AREA 01NM
CENTERED ON GEO COORD: 330749S/0704031W
JUMP SUBJ ACCS AUTH. MANDATORY USE OF A/C SSR
INSTRUCTIONS: PELDEHUE INFO 118.6MHZ
SANTIAGO INFO 122.4MHZ
SANTIAGO RDR 129.7MHZ/119.7MHZ
F) GND G) 1200FT AGL

W1487/21 VALID: 02-NOV-21 1200 - 03-NOV-21 1500
DLY BTN 1200-1500
FRNG EXER SECT 12NM W PUNTA ANGELES ZONE...D...
SQUARE AREA 7NM ON NXT GEO COORD:
325800S/0720130W
325800S/0715300W
330500S/0715300W
330500S/0720130W
INSTRUCTIONS: VINA DEL MAR APP 129.3MHZ
VINA DEL MAR TWR 118.9MHZ
SANTIAGO RDR 123.8MHZ /129.1MHZ
COOR: S. VALDIVIA PHONE: +56 9 42947199
F) SFC G) 8000FT AMSL

W1503/21 VALID: 02-NOV-21 1000 - 02-NOV-21 2359
FRNG EXER SECT 37NM W TUNQUEN
ZONE ...D... POLIGONO GEO COORD:
330700S/0723130W
332700S/0723130W
330700S/0720800W



332700S/0721224W
 INSTRUCTIONS:SANTIAGO RDR 123.8MHZ
 VINA DEL MAR APP 129.3MHZ
 COOR: SARGENTO I. CONCHA CEL 954104770 322572356
 F) SFC G) FL250

W1504/21 VALID: 02-NOV-21 1000 - 05-NOV-21 2000

DLY BTN 1000-2000
 FRNG SECT W LOS MOLLES ZONE ...D... POLYGONAL AREA OF
 48.5 X 50NM WI NXT GEO COORD:
 323800S/0721300W
 323800S/0731200W
 315000S/0731200W
 315000S/0723200W
 320000S/0721300W

INSTRUCTIONS: SANTIAGO RDR 123.8MHZ / 129.1MHZ
 OPERATOR MUST CALL TO ACCS SUPERVISOR FOR ADVISING BEGINING AND
 END TO CEL PHONE +56 9 88378367
 COOR: COMANDANTE BALARESQUE P. TEL: 32 2537271
 F) SFC G) 70000FT AMSL

A5076/21 VALID: 29-OCT-21 1547 - UFN

REF AIP CHILE VOL II AMDT 89 EFFECTIVE FROM 02 DEC 2021, GEN 0.13,
 GEN 0.14 AND GEN 0.16, ARE MODIFIED AS FOLLOWS:

-WHERE IT SAYS FREIRE STAR 1 RWY01 NEKOR 2A/ KIBEL 1D/ MALTU 2
 MUST SAY FREIRE STAR 1 RWY 01 NEKOR 3A/ KIBEL 1D/ MALTU 3
 -WHERE IT SAYS FREIRE SID 2 KIDEM 3B / KETIR 3K / MALTU 3B / KIBEL
 1L MUST SAY FREIRE SID 2 KIDEM 3B / KETIR 3K / MALTU 3B / KIBEL 1M
 -WHERE IT SAYS PUERTO MONTT PDC DATE 02 DEC 2021

MUST SAY 03 DEC 2020

-WHERE IT SAYS PUERTO MONTT BCAC DATE 02 DEC 2021

MUST SAY 15 AUG 2019

-WHERE IT SAYS PUERTO MONTT STAR 3 SARTO 1B / OSARA 3B / GENEK 4B
 / GENEK 4C / CAUKE 3B

MUST SAY STAR 3 SARTO 1B / OSARA 3B / GENEK 4B / GENEK 4C / CAUKE
 4B -WHERE IT SAYS PUERTO MONTT SID 1 KIKOP 2D / KIKOP 2A / VOVKI
 2B / VOVKI 4A

MUST SAY SID 1 KIKOP 2D / KIKOP 4A / VOVKI 2B / VOVKI 4A

-WHERE IT SAYS PUERTO MONTT SID 2 GUTIN 2D / OSARA 2K / GUTIN 4B /
 OSARA 4J

MUST SAY SID 2 GUTIN 2D / OSARA 2K / GUTIN 4B / OSARA 3J

-WHERE IT SAYS PUNTA ARENAS ATCSMAC DATE 12 AUG 2021

MUST SAY 02 DEC 2021

-WHERE IT SAYS VALDIVIA IAC 1 ILS RWY 35 DATE 02 DEC 2021

MUST SAY 12 AUG 2021

-WHERE IT SAYS VALDIVIA INFO RWY DATE 02 DEC 2021

MUST SAY 12 AUG 2021)

//END PART 01//

A5076/21 NOTAMN

Q) SCXX/QXXXX/IV/BO/W/000/999/4126S07306W100

A) SCFZ SCEZ SCTZ SCIZ SCCZ PART 02 OF 02 B) 2110291547 C) PERM E)

-WHERE IT SAYS VALDIVIA IAC 2 VOR RWY 17 DATE 02 DEC 2021

MUST SAY 16 AUG 2018

-WHERE IT SAYS VALDIVIA IAC 3 VOR RWY 35 DATE 02 DEC 2021

MUST SAY 16 AUG 2018

F) GND G) UNL)

END PART 02 OF 02

R0097/21 VALID: 29-OCT-21 1440 - 11-NOV-21 2359

TEMPORARY PROHIBITED ZONES ARE ESTABLISHED TO THE FLT OF RPAS,
 AS FOLLOWS:

1-SECT TEMUCO, RDO 02NM, NXT GEO COORD:

384438S / 0723539W

2-SECT VICTORIA, RDO 02NM, NXT GEO COORD:

381351S / 0722035W

3-SECT ANGOL, RDO 02NM NXT GEO COORD:



374751S / 0724141W
 4-SECT EAST VICTORIA, RDO 02NM NXT GEO COORD:
 381221S / 0720936W
 5-SECT LONQUIMAY, RDO 02NM NXT GEO COORD:
 382715S / 0712153W
 6-COMUNA CARAHUE, DELIMITED AREA NXT GEO COORD:
 384128.02S / 0732242.55W
 384352.38S / 0732028.88W
 384123.31S / 0730855.19W
 384507.35S / 0730919.43W
 7-COMUNA VICTORIA DELIMITED AREA NXT GEO COORD:
 381541.33S / 0722538.07W
 PART 1 OF 2
 R0097/21 NOTAMN
 Q) SCXX/QRPCA/IV/BO/W/000/020/3727S07327W005
 A) SCEZ SCTZ PART 2 OF 2 B) 2110291440 C) 2111112359
 E) 382536.29S / 0720816.72W
 381707.42S / 0720227.94W
 380240.81S / 0721701.25W
 8-COMUNA ANGOL DELIMITED AREA NXT GEO COORD:
 374337.50S / 0724231.44W
 380234.56S / 0731009.68W
 381439.04S / 0725959.75W
 375402.44S / 0722941.53W
 9-COMUNA COLLIPULLI DELIMITED AREA NXT GEO COORD:
 381616.06S / 0725049.14W
 375158.17S / 0722728.33W
 375811.26S / 0721410.71W
 382115.06S / 0723326.37W
 10-COMUNA TEMUCO DELIMITED AREA NXT GEO COORD:
 384620.43S / 0724025.53W
 385225.99S / 0724258.50W
 385244.53S / 0721904.51W
 384422.48S / 0721450.17W

SPECIAL SITUATIONS

THE ADMINISTRATION OF THE PROHIBITED AREAS DESCRIBED, IN MATTERS OF) REMOTELY PILOTED AIRCRAFT FLIGHT (RPAS), IS IN CHARGE OF A LIAISON OFFICER, WITH A TELEPHONE CONTACT POINT +56999791707.

F) GND G) 2000FT AGL)

PART 2 OF 2

A5072/21 VALID: 29-OCT-21 1201 - 01-DEC-21 0004

DLY BTN 1200-FCCV
 ACFT HDG NORTH ON ROUTE LOW VFR WITH DESTINATION SCVH MUST KEEP 4000FT AMSL UP TO VERTICAL THR 03 SCVH, THEN ENTER CIRCUIT OF TRANSIT RIGHT TO RWY21 ACCORDING TO TRANSIT SITUATION. COMMUNICATIONS PELDEHUE INFORMATION 118.6MHZ UP TO VERTICAL THR03 SCVH THEN TIBA 126.75MHZ
 VERSION ES

ACFT HDG NORTE EN RUTA VFR BAJA CON DESTINO SCVH DEBERA MANTENER 4000FT AMSL HASTA VERTICAL THR03 SCVH, POSTERIOR INGRESAR CIRCUITO DE TRANSITO DERECHO A RWY21 DE ACUERDO A SITUACION DE TRANSITO. COMUNICACIONES PELDEHUE INFORMACION 118.6MHZ HASTA VERTICAL THR 03 SCVH POST TIBA 126.75MHZ
 F) GND G) 4000FT AMSL

A5036/21 VALID: 29-OCT-21 1200 - 01-DEC-21 0004

DLY BTN 1200 - FCCV
 FLIGHT INFORMATION SERVICE AND ALERT WILL BE PROVIDED BY PELDEHUE INFORMATION LOW VFR ROUTE BTN COLINA AND TUNEL CHACABUCO, ACFT MUST CONTACT FREQ 118.6MHZ.
 OTHER HR CONTACT SANTIAGO INFORMATION FREQ 122.4MHZ
 EXC ACFT IN SCVH AD TRAFFIC PATTERN FREQ TIBA 126.75MHZ
 F) GND G) 4500FT AMSL

R0096/21 VALID: 27-OCT-21 1231 - 11-NOV-21 2359



TEMPORARY PROHIBITED ZONES ARE ESTABLISHED TO THE FLIGHT OF RPAS,
AS FOLLOWS:

1-SECTOR LOS ALAMOS, NXT GEO COORD:

372729.20S/732706.18W

373905.14S/732252.33W

373534.81S/732240.76W

373856.59S/732715.94W

2-SECTOR LOS ANGELES, NEXT GEO COORD:

372701.76S/722155.74W

372744.57S/722051.02W

372700.81S/722052.25W

372746.09S/722152.86W

3-SECTOR CONTULMO, NXT GEO COORD:

375841.14S/731555.17W

380218.17S/731128.93W

375845.82S/731122.22W

380213.88S/731603.56W

4-SECTOR TIRUA, NXT GEO COORD:

381844.92S/733146.09W

382229.20S/732729.20W

381858.20S/732713.45W

382217.13S/733158.41W

THE ADMINISTRATION OF THE TEMPORARY PROHIBITED ZONES DESCRIBED, IN
MATTERS OF FLIGHT OF REMOTELY PILOTED SYSTEMS REMOTELY (RPAS), IS
IN CHARGE OF THE CHIEF OF SERVICE OF THE CHIEF OF THE NATIONAL
DEFENSE FOR THE BIO BIO AND ARAUCO REGION, WITH THE CONTACT POINT
TELEPHONE + 56 41 2742084 CEL +56997905151

F) GND G) 2000FT AGL

A4971/21 VALID: 21-OCT-21 2031 - 16-DEC-21 2359

TRIGGER NOTAM - PERM AMDT AIP CHILE VOL I NR 53 AND AMDT AIP CHILE
VOL II NR 89 WEF 02 DEC 2021.

AVBL AT:

[HTTPS://WWW.AIPCHILE.GOB.CL/AIP/VOL1/SECCION/AMDT](https://www.aipchile.gob.cl/aip/vol1/seccion/amdt)

[HTTPS://WWW.AIPCHILE.GOB.CL/AIP/VOL2/SECCION/AMDT](https://www.aipchile.gob.cl/aip/vol2/seccion/amdt)

R0086/21 VALID: 23-SEP-21 1457 - 20-DEC-21 2359

MON-SAT BTN 1100-FCCV

ZONE ...R... ACT SC-R6 ARMY IFR INSTRUCTION ZONE

SANTIAGO RADAR 123.8MHZ/121.1MHZ

SANTIAGO RADIO 127.5MHZ

RANCAGUA TWR 118.65 MHZ

F) FL030 G) FL070

R0085/21 VALID: 23-SEP-21 1455 - 20-DEC-21 2359

MON-SAT BTN 1100-FCCV

ZONE ...R... ACT SC-R2 ARMY IFR INSTRUCTION ZONE

SANTIAGO RADAR 123.8MHZ/121.1MHZ

SANTIAGO RADIO 127.5MHZ

RANCAGUA TWR 118.65 MHZ

F) FL030 G) FL090

W1263/21 VALID: 21-SEP-21 1100 - 21-NOV-21 1800

DLY BTN 1100-1800

RPAS FLT ZONE ...D... POWERLINE BTN COPIAPO / LA SERENA

GEO COORD: 273108S/702537W

300710S/711259W

CENTERED NXT GEO COORD: 295456S/711149W RDO 15 NM

BEGINNING / END OF FLT COOR SERENA TWR TEL (51)2272744

INSTRUCTIONS: LA SERENA TWR 129.4MHZ

LA SERENA APP 135.35MHZ

F) GND G) 270FT AGL

F0261/21 VALID: 06-SEP-21 2010 - UFN

REF AIP CHILE VOL I PAGE AD 3.9-3.12-C DE FECHA 22 ABR 2021

ELIMINESE TODA INFO RESPECTO DE COQUIMBO/AD TAMBILLOS SCCQ

A4191/21 VALID: 05-SEP-21 0400 - 03-APR-22 0259

SUMMER TIME IS ESTABLISHED IN CHILE AS FOLLOWS:



AT CONTINENTAL AREA, LMT = UTC - 3HR
AT WESTERN INSULAR AREA, LMT = UTC - 5HR
SE ESTABLECE HORARIO DE VERANO EN CHILE COMO SIGUE:
EN AREA CONTINENTAL, LMT = UTC - 3HR
EN AREA INSULAR OCCIDENTAL, LMT = UTC - 5HR

W1032/21 VALID: 16-AUG-21 2117 - 16-NOV-21 2359

DLY BTN 1200-2200
PARAGLIDERS EXER SECT CERRO GRANDE ZONE...D...
SEMICIRCLE TO S SECT CERRO GRANDE RDO 1 NM
CENTERED ON GEO COORD: 295619S/0711327W
ACT SUBJ AUTH LA SERENA TWR
INSTRUCTIONS: LA SERENA TWR 129.4 MHZ ALTN 121.9 MHZ
F) GND G) 2000 FT AGL

W1031/21 VALID: 16-AUG-21 2117 - 16-NOV-21 2359

RAISING OF CAPTIVE MET BALLOON ZONE...D...
SECT EL TORO-ANDACOLLO RDO 0.5 NM
LEN 4M DIAMETER 2M CENTERED ON NXT GEO
COORD:301514S/0710619W
F) GND G) 700FT AGL

W1030/21 VALID: 16-AUG-21 2116 - 16-NOV-21 2359

RAISING OF CAPTIVE MET BALLOONS ZONE...D...
SECT CHEPIQUILLA-ANDACOLLO RDO 0.5 NM
LEN 4M DIAMETER 2M CENTERED ON NXT GEO COORD:
301457S/0710519W
F) GND G) 700FT AGL

A3336/21 VALID: 12-AUG-21 0000 - UFN

REF AIP-CHILE VOL I AMDT NR 52 12 AUG 2021, ENR 3.3-6.L AWY 780
AND ENR 3.3-12 AWY UL780 WPT VUTRA IS MODIFIED AS FOLLOWS:
WHERE IT SAYS : 294958S / 723432W
IT MUST SAY : 294058S / 723432W

A3382/21 VALID: 12-AUG-21 0000 - UFN

REF AIP-CHILE VOL I AMDT NR 52 DATED 12 AUG 2021,
ENR PAG 3.3-4.UL AWY UL 348 IS MODIFIED AS FOLLOWS:
TIRLO - LOKOL WHERE IT SAYS:267/087 69NM IT MUST SAY: 266/086
100NM LOKOL - XONAT WHERE IT SAYS:266/086 100NM IT MUST SAY:
270/089 253NM XONAT - TOGUP WHERE IT SAYS:270/089 253NM IT MUST
SAY: 266/086 254NM TOGUP - OSOGU WHERE IT SAYS:266/086 254NM IT
MUST SAY: 266/086 257NM OSOGU - KEXEM WHERE IT SAYS:266/086 257NM
IT MUST SAY: 266/088 262NM KEXEM - MUGUK WHERE IT SAYS:266/088
262NM IT MUST SAY: 268/090 267NM

A3350/21 VALID: 22-JUL-21 1530 - UFN

SANTIAGO OCEANIC CONTROL CENTER SAT PHONE
REF AIP CHILE VOL I PAGES ENR 2.1-21 AND 2.1-22
DATED 15AUG2019
HAS BEEN MODIFIED AS FOLLOWS:
WHERE IT SAYS: TEL SATELITAL 0881623489497
IT MUST SAY: TEL SATELITAL 0881652415790

A3154/21 VALID: 08-JUL-21 1930 - UFN

SANTIAGO OCEANIC CONTROL CENTER SAT PHONE
REF AIP CHILE VOL I PAGE ENR 2.1-5 DATED 22APR2021
HAS BEEN MODIFIED AS FOLLOWS:
WHERE IT SAYS: TEL SATELITAL 0881623489497
IT MUST SAY: TEL SATELITAL 0881652415790

A3126/21 VALID: 06-JUL-21 1523 - UFN

REFERENCE TO AIP-CHILE VOL I PAGE ENR 5.1-6 IS MODIFIED AS
FOLLOWS: WHERE IT SAYS: SC-P30 FIR SANTIAGO- VINNA DEL MAR
IT MUST SAY : SC-P30 FIR SANTIAGO - PALACIO
PRESIDENCIAL VINNA DEL MAR

=====
EXTENDED AREA AROUND DESTINATION ALTERNATE AIRPORT(S)
=====



SCEZ SANTIAGO FIR/UIR

Please see section EXTENDED AREA AROUND DESTINATION

=====
AREA ENROUTE DEPARTURE - DESTINATION
=====

SCEZ SANTIAGO FIR/UIR

Please see section EXTENDED AREA AROUND DESTINATION



[Crew Alert & Bulletin]

=====

SB007/14 VALID: 12-OCT-14 0330 - UFN

SB007/14 COMPANY NOTAM
WHEN PLANNING A COST INDEX, 2 OPTIONS ARE AVAILABLE. PILOTS MAY EITHER SELECT A SPECIFIC COST INDEX NUMBER FROM THE LIST, OR THEY MAY SELECT "AUTO". WHEN PLANNING AN "AUTO" COST INDEX, THE SYSTEM WILL REFERENCE THE SCHEDULED "TIME ENROUTE" OPTION AND ATTEMPT TO CHOOSE A COST INDEX WHICH CLOSELY MATCHES THIS VALUE. NOTE THAT THE "TIME ENROUTE" OPTION IS MEANT AS A GATE TO GATE TIME (AS INDICATED ON AN AIRLINE'S FLIGHT SCHEDULE, FOR EXAMPLE). IF A "TIME ENROUTE" OF 2:30 IS SELECTED, THE SYSTEM WILL SUBTRACT THE TAXI TIMES FROM THIS VALUE TO DETERMINE THE SCHEDULED AIR TIME. IT WILL THEN DETERMINE AND USE THE COST INDEX WHICH MATCHES THIS AIR TIME.

SB003/13 VALID: 13-JUL-13 0320 - UFN

SB003/13 COMPANY NOTAM
ALL FLIGHT CREW: PLEASE PAY SPECIAL ATTENTION TO THE UNITS SELECTION WHEN GENERATING A FLIGHT PLAN. FAILURE TO IDENTIFY THE CORRECT UNITS WHEN REFUELING PRIOR TO FLIGHT CAN RESULT IN DEPARTING WITH INSUFFICIENT FUEL AND/OR AN ERRONEOUS PAYLOAD.

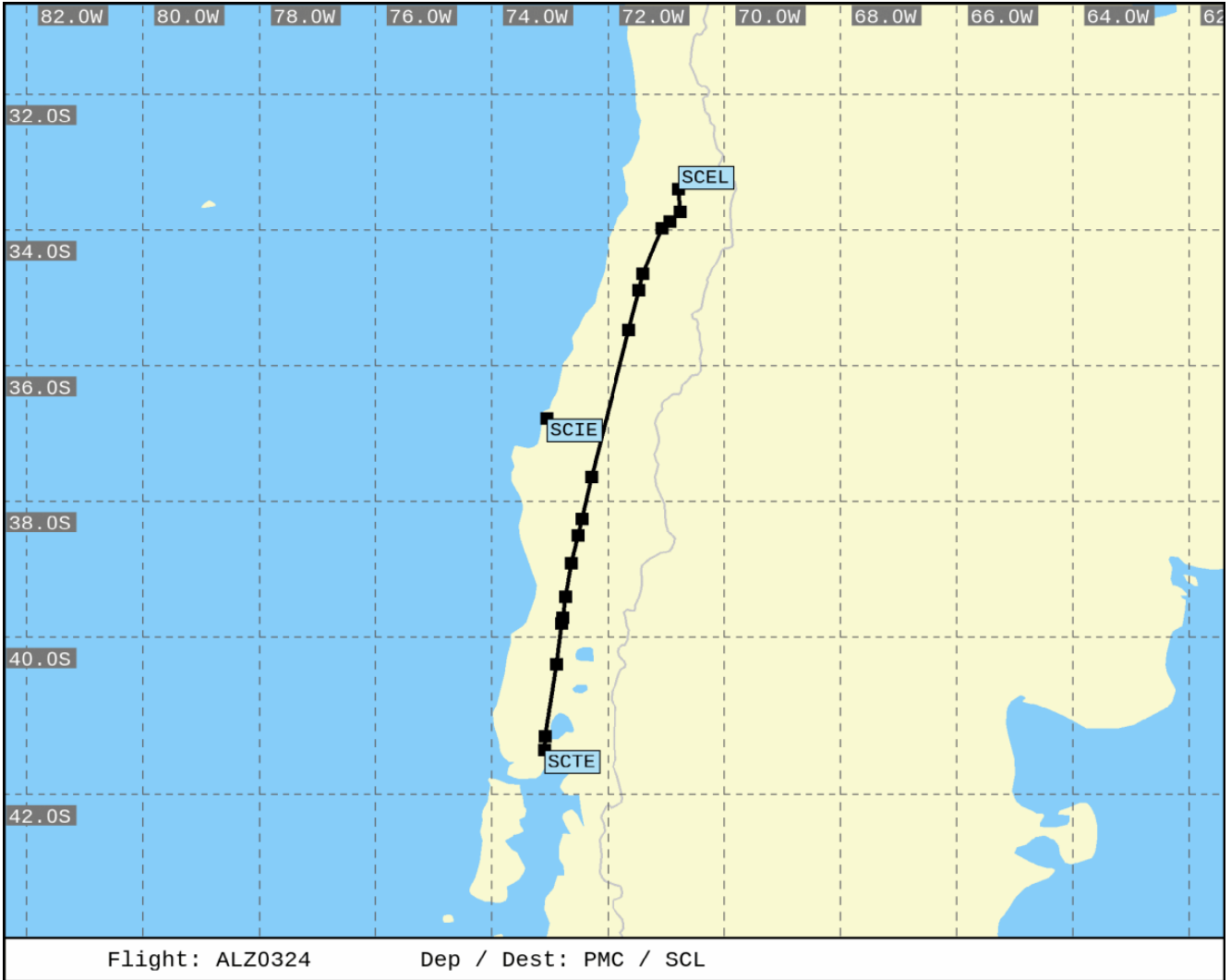
=====

NIL

===== END OF LIDO-NOTAM-BULLETIN =====

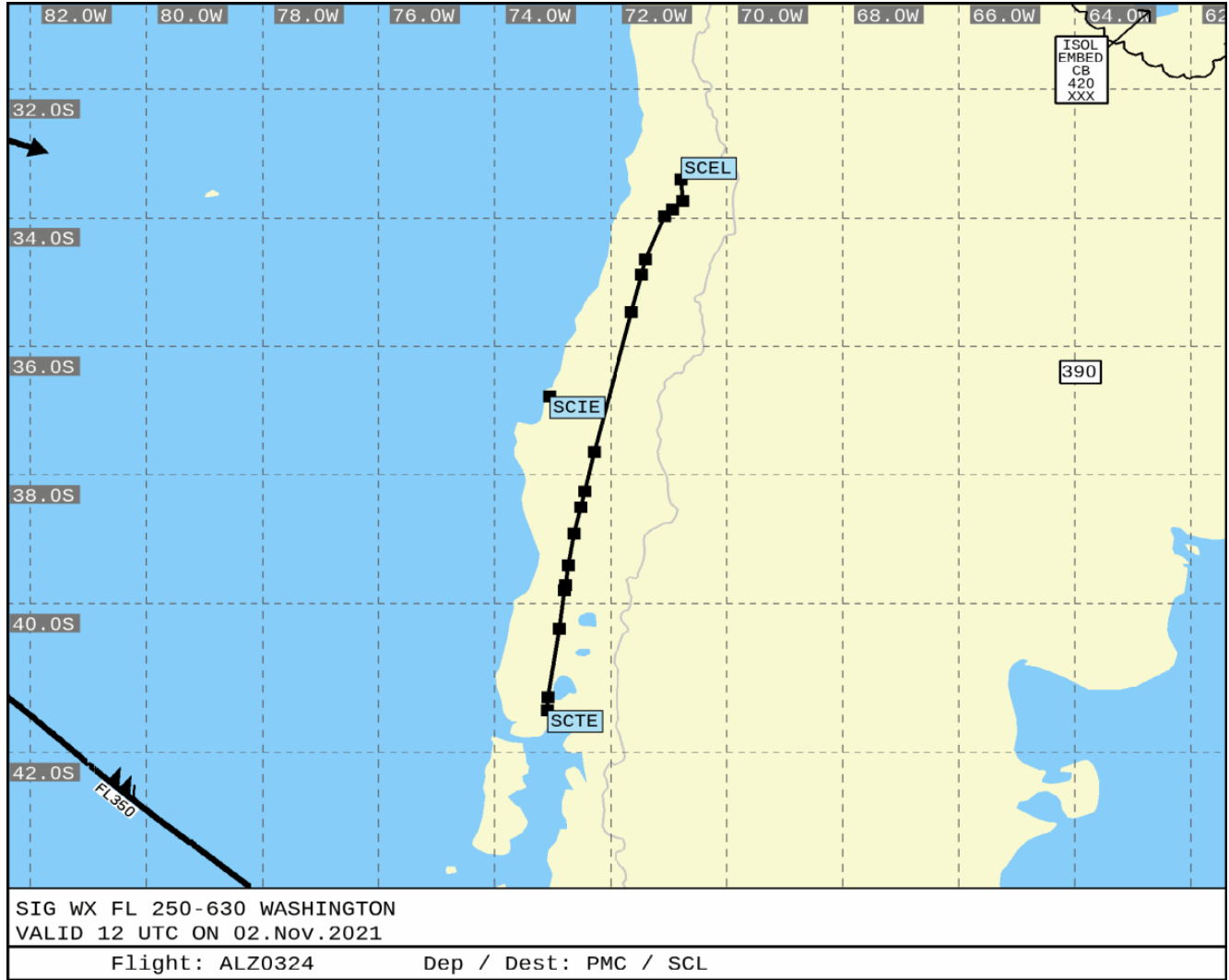


Route



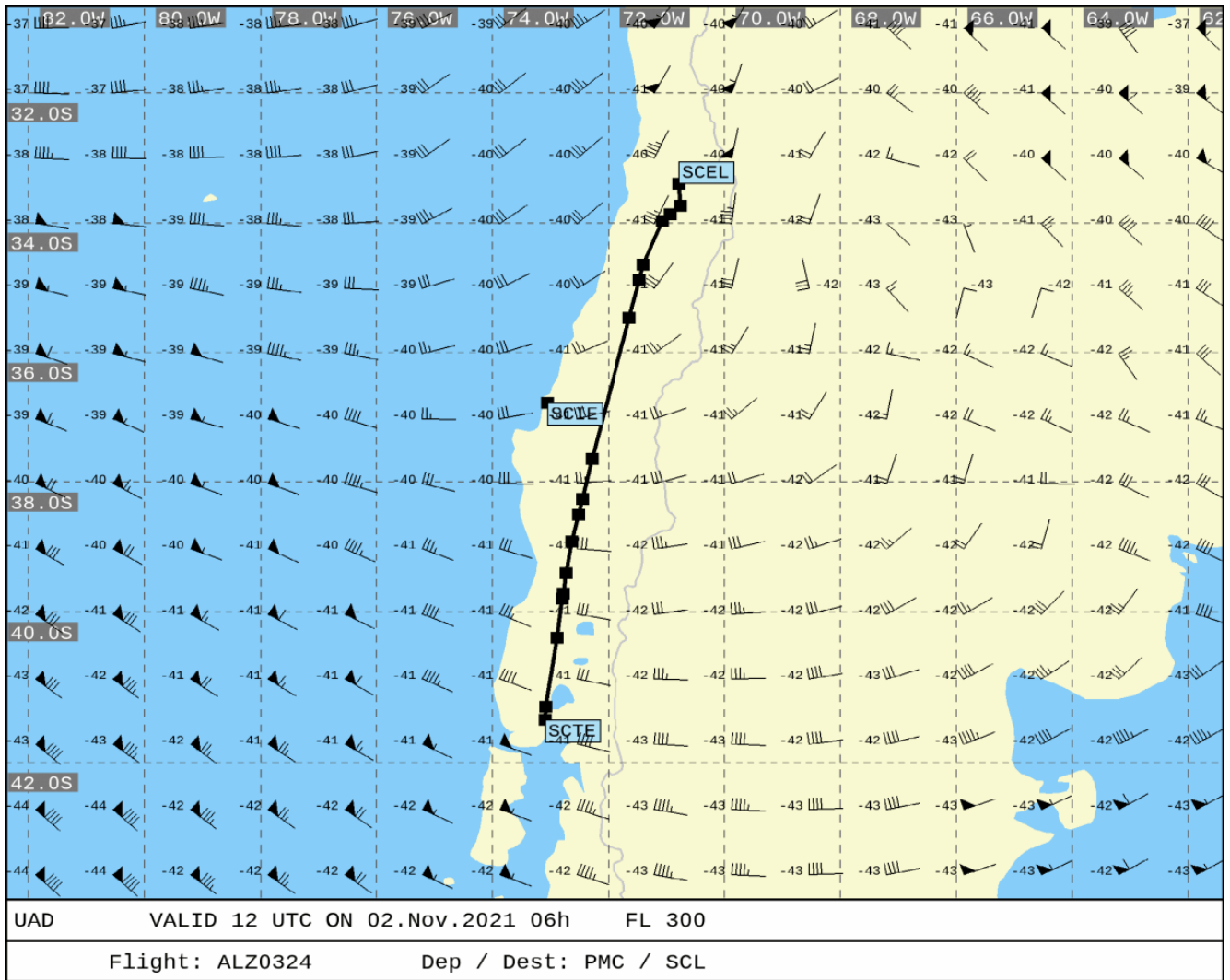


SigWx 1 of 1



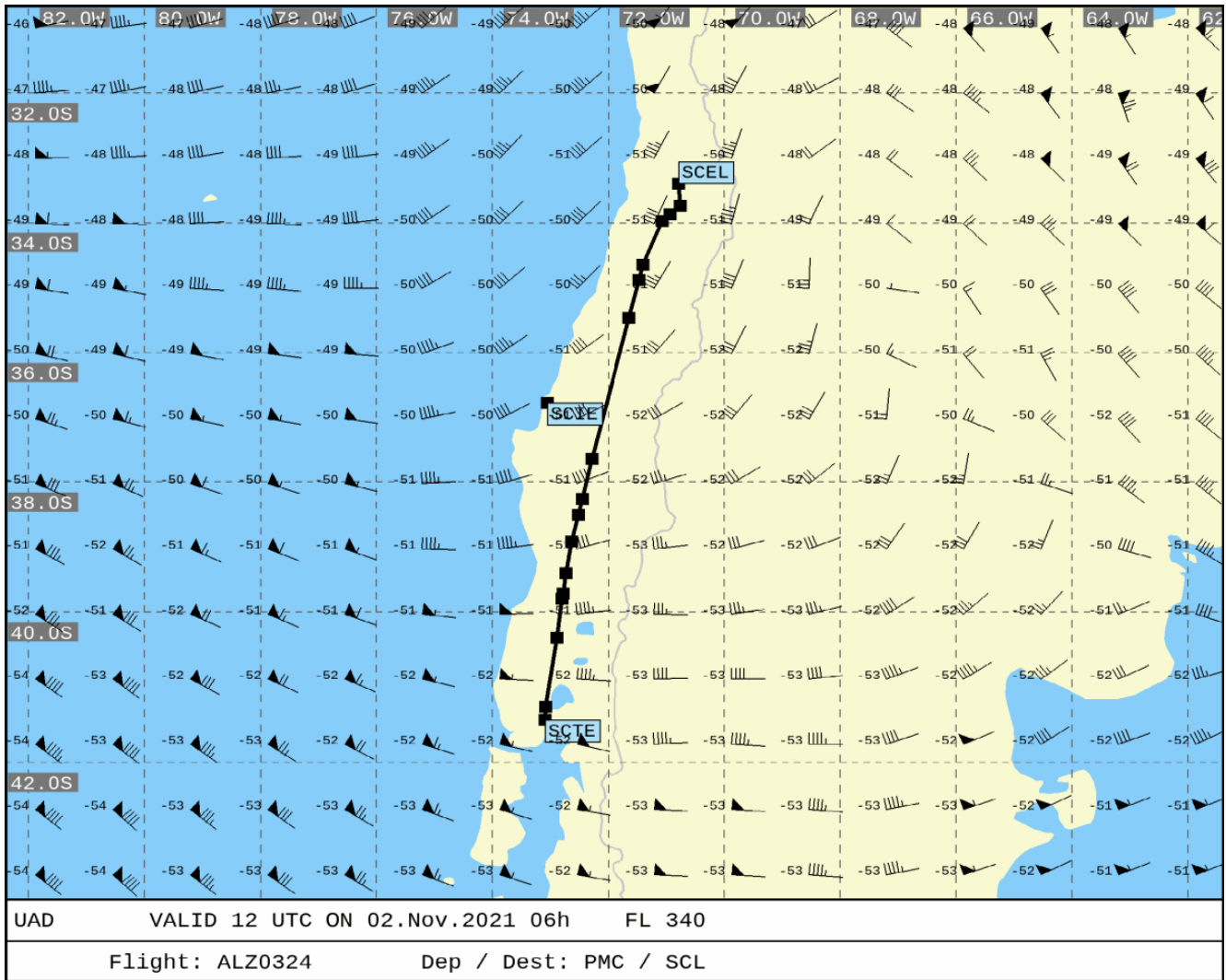


UAD 1 of 3



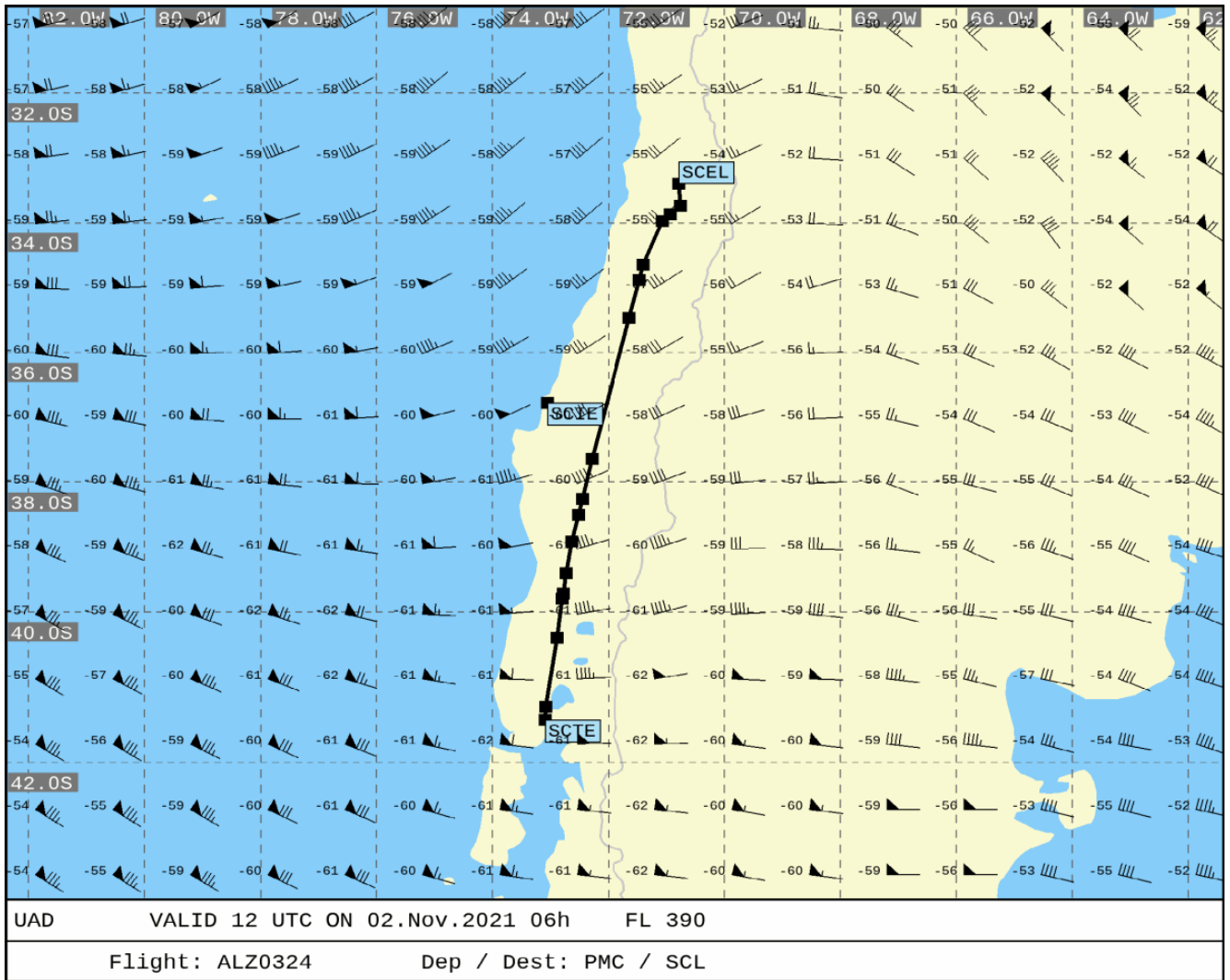


UAD 2 of 3





UAD 3 of 3





Vertical profile

